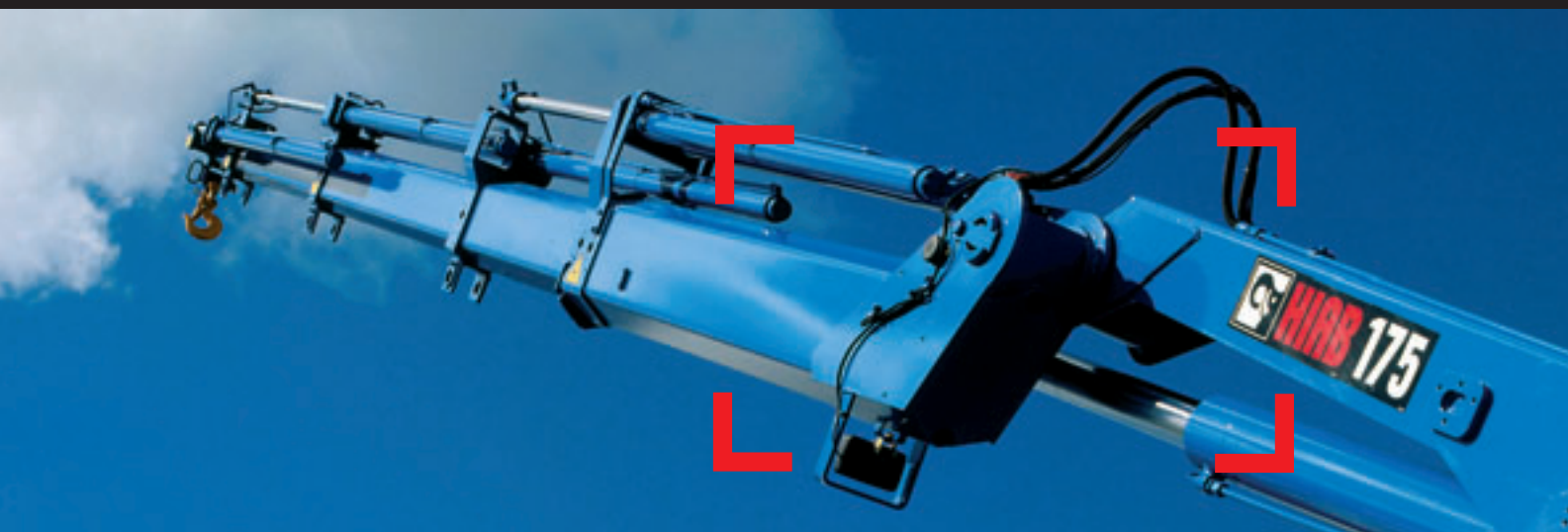


HIAB 175 Capacity 17 tm



Product brochure



Extraordinary power and reach



The HIAB 175 is impressive

With the HIAB 175 you get a versatile crane with outstanding performance. You get high manoeuvrability and safety which all adds up to a crane that will serve you efficiently on all types of jobs. The crane is equipped with a C-link system which makes operating close to the column even easier and also increases capacity when lifting to high positions. The C-link also absorbs shocks and jerks when excavating, forces that would otherwise be transferred to the crane base. You get quality down to the smallest detail, all adding up to a crane with a long service life.

Delivery that meets your specifications

The HIAB 175 is available with up to five hydraulic and two manual extensions, giving a maximum outreach of more than 18 metres. The long reach is achieved while still keeping the boom system low in weight, this is thanks to the use of extra-high-tensile steel. The crane is delivered with the SPACE 3000 or 4000 intelligence system according to your requirements. Further, the crane can be delivered with the XSDrive remote control unit, providing a flexible and efficient way of controlling your crane.

Adapted hydraulics system

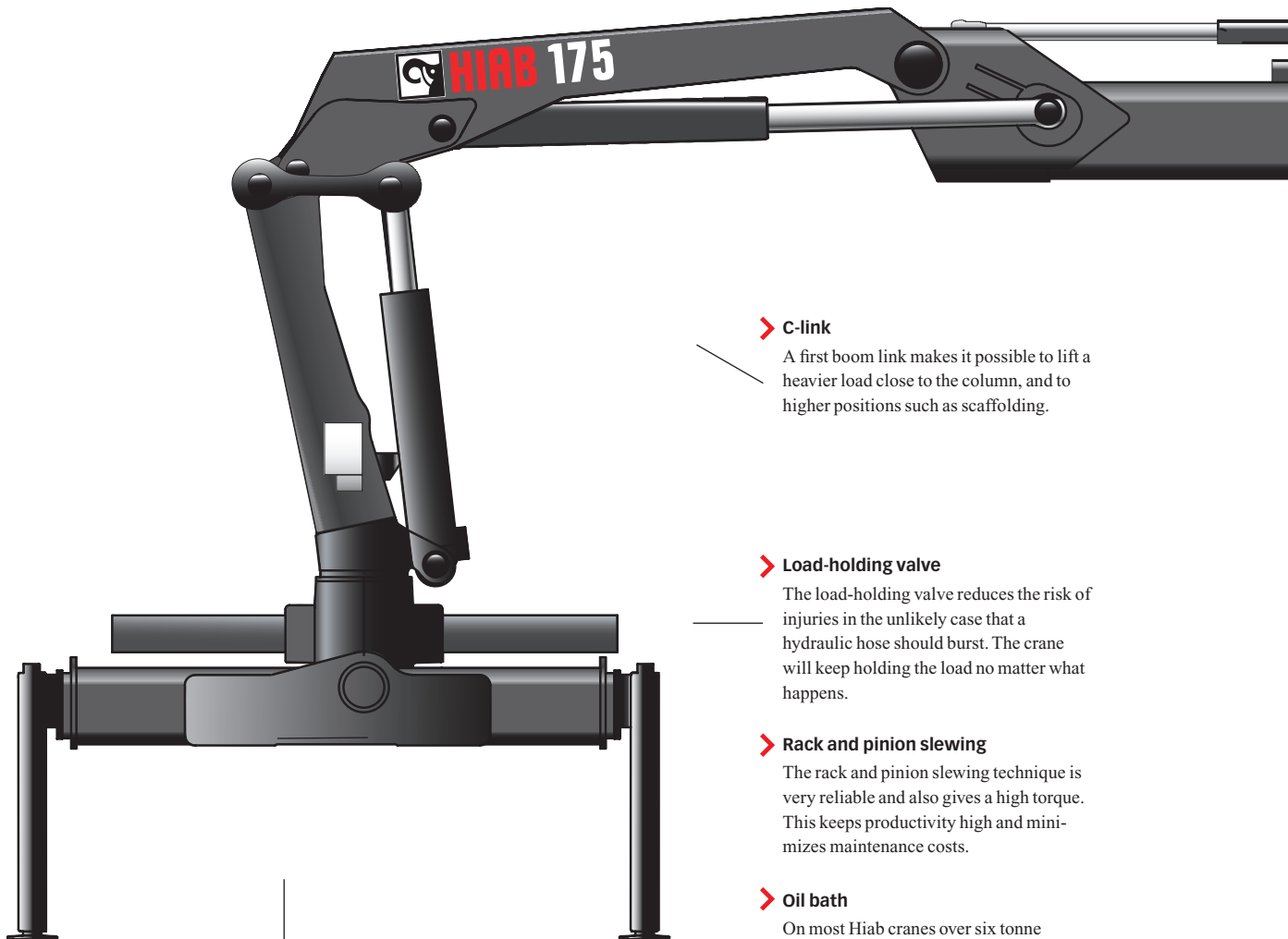
Depending on your choice the crane will be fitted with either a HIAB Valve 80 or a HIAB Valve 91. The valves are designed to handle functions provided by the intelligence system chosen for your crane. They are also adapted to a required oil flow, thus keeping excess heat and vibrations to a minimum.

Front runners in boom design

A Hiab crane is built to withstand extreme loading under all kinds of circumstances, in all field conditions. Keeping the boom reliable, tough and sturdy under extreme loading has made Hiab a world leader in crane boom engineering. Taking a closer look at the crane, one can point out a number of features that our customers benefit from.

Hexagonal boom profile

The hexagonal profile used on Hiab booms is a ground-breaking design introduced by Hiab many years ago. It is now standard throughout the market of loader cranes. Even the smallest of Hiab cranes benefit from this design.



> Manual extensions

The crane can be equipped with manual boom extensions. These are easily mounted and give an extra outreach that can prove valuable.

> C-link

A first boom link makes it possible to lift a heavier load close to the column, and to higher positions such as scaffolding.

> Load-holding valve

The load-holding valve reduces the risk of injuries in the unlikely case that a hydraulic hose should burst. The crane will keep holding the load no matter what happens.

> Rack and pinion slewing

The rack and pinion slewing technique is very reliable and also gives a high torque. This keeps productivity high and minimizes maintenance costs.

> Oil bath

On most Hiab cranes over six tonne metres the slewing mechanism is kept in an oil bath. This keeps the slewing mechanism in great condition throughout the years making sure the crane can be confidently used for extremely demanding applications.

> Hoses internally

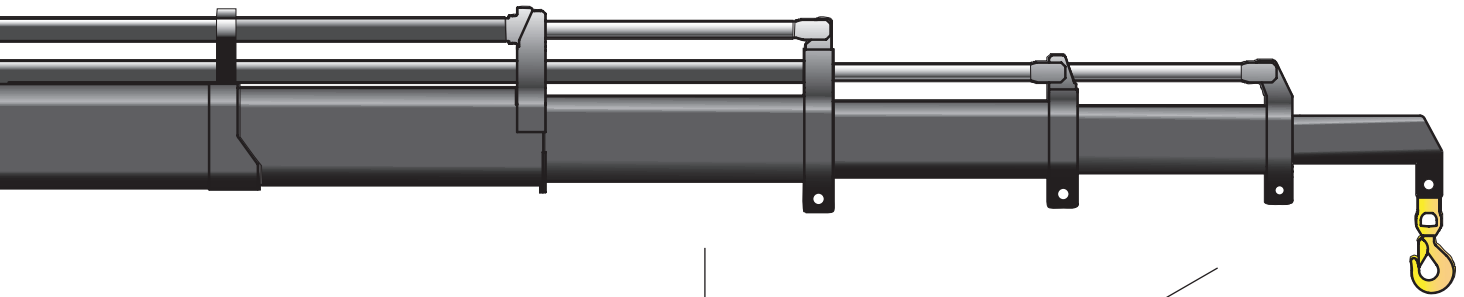
The hoses are run internally in the crane body and in the outrigger beam, where they are out of harm's way, thus reducing maintenance costs.

> **Hexagonal boom profile**

The hexagonal profile ensures the boom is always in perfect balance, due to its shape and big support surface. The profile also minimizes boom deflection. This reduces maintenance costs and increases efficiency.

> **Low headroom**

The cylinders on top of the extensions are mounted so that they take up less space the further out they are positioned. This provides easy access to confined spaces, thus improving efficiency.



> **Large slide pads**

The hexagonal profile enables the use of larger slide pads. This makes the extensions move smoother and reduces mechanical wear on the boom.

> **Attachable tools**

A wide range of attachable tools are available for your Hiab crane. These make sure you can carry out a lot of different tasks.

HIAB 175 Capacity 17 tm

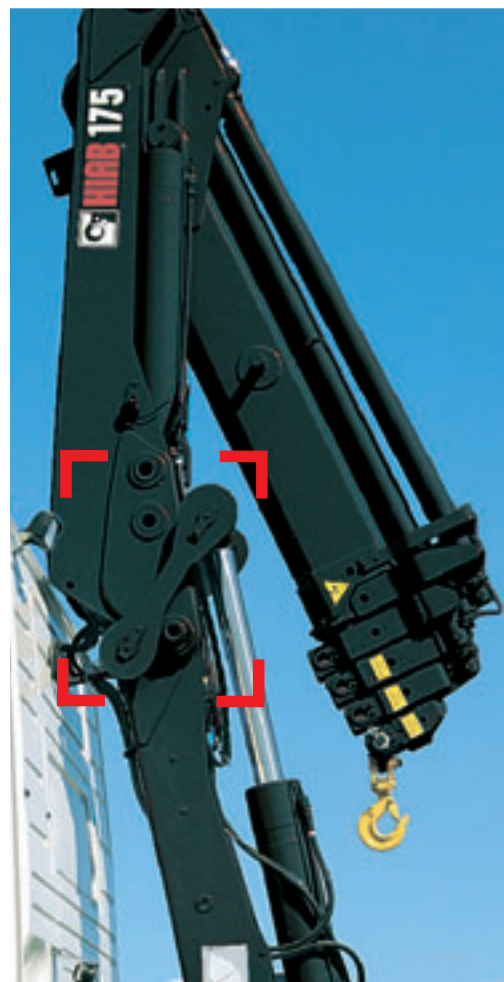
> SPACE 3000 intelligence system

SPACE 3000 intelligently monitors and controls the electronic functions of your crane. These functions are focused on assisting you in two aspects, safety and productivity.

Safety is managed by an Over Load Protection (OLP) function. The OLP, among other things, allow you to slew in front of the truck cabin, thereby increasing your working area. Also an Automatic Dumping of Oil (ADO) function keeps the cooling and lubricating properties of the oil at its best for a longer time. Further more, the system handles functions primarily used by service personnel such as fault code indication and load cycle data.

> Operating your crane by remote control

The benefit of Hiab's remote control units ensures that the crane operator can be positioned at the best possible location when operating the crane. This leads to more efficient, comfortable work and also increases safety. A further spin-off effect is that you can be your own loading assistant due to the fact that you can position yourself next to the load, or wherever the loading assistant would be standing. Your tasks will be completed faster and at a lower cost.



> C-link

The C-link system comprises of a first boom link which significantly increases the lifting capacity of the crane in high boom positions, especially when working close to the column. In practice, this could mean the difference between loading and not loading a heavy weight onto a truck.

> XSDrive

The HIAB XSDrive has been ergonomically developed to relieve you of stress and strain in the hands, arms and back. The load indicators provide information for quick and correct actions when work is going on. There are also a lot of accessories that can be added in order to find the perfect controlling solution just for you.

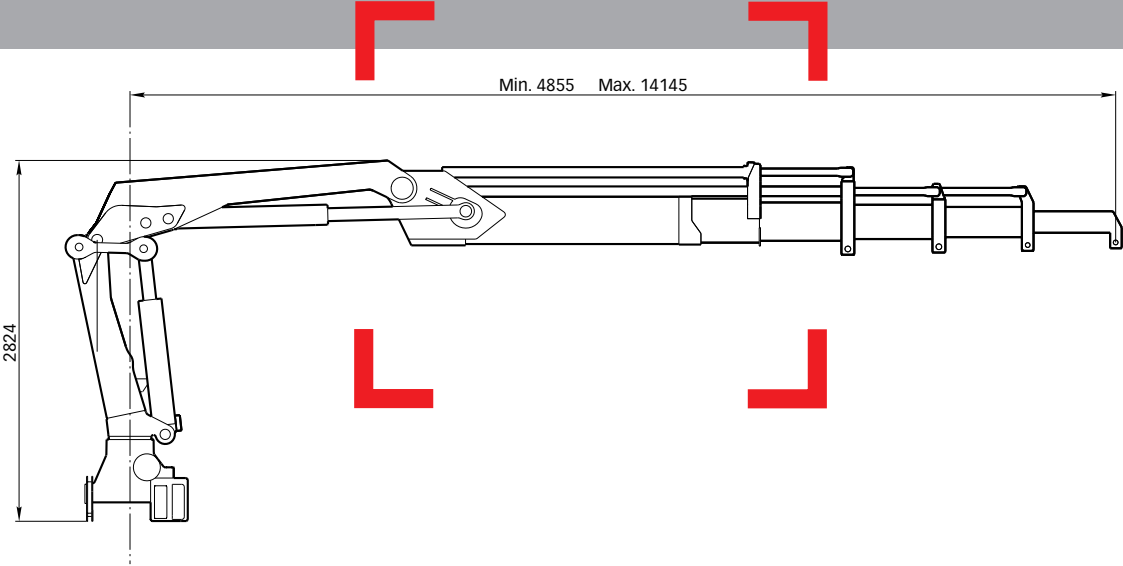
< Well protected control levers

The control box and other sites where manual lever controls are positioned are always set up to be protected from accidental movements from the operator. This is done by mounting a protective bar close to the levers, this bar can also be used to rest the fore arms on while operating the crane.





HIAB 175 Capacity 17 tm



Basic data

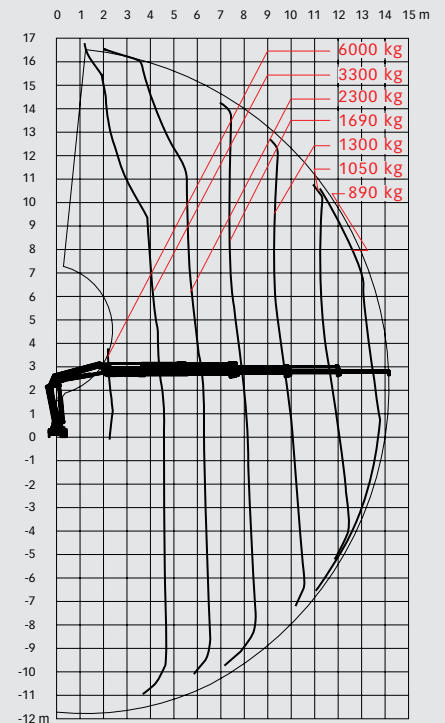
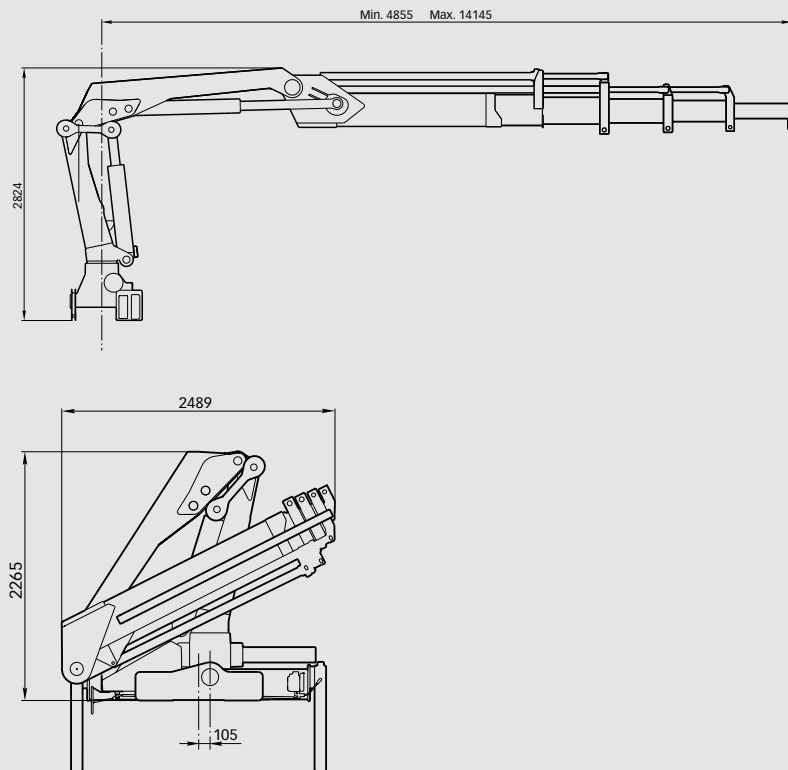
HIAB 175 Basic data

Technical data

	175-1	175-2	175-3	175-4	175-5
Max. lifting capacity (kNm)	168	163	156	151	148
Outreach - hydraulic extensions (m)	6.2	8.0	10.0	12.1	14.1
Outreach - manual extensions (m)	-	14.2	16.3	18.5	18.4
Outreach / lifting capacity (m / kg)	2.3 / 6500	2.3 / 6500	2.3 / 6300	2.3 / 6200	2.3 / 6000
	4.5 / 3790	4.5 / 3700	4.5 / 3530	4.5 / 3420	4.5 / 3300
	6.1 / 2780	6.2 / 2640	6.2 / 2490	6.2 / 2380	6.2 / 2300
	-	7.8 / 2080	8.0 / 1870	8.0 / 1750	8.0 / 1690
	-	-	9.8 / 1500	9.9 / 1370	9.9 / 1300
	-	-	-	11.8 / 1100	11.8 / 1050
	-	-	-	-	13.8 / 890
Slewing angle	406°	406°	406°	406°	406°
Height in folded position (mm)	2265	2265	2265	2265	2265
Width in folded position (mm)	2451	2451	2451	2487	2489
Installation space needed (mm)	890	890	890	890	990
Weight - "standard" crane without stabilizer (kg)	1930	2070	2220	2350	2460
Weight - stabilizer equipment (kg)	238 - 380	238 - 380	238 - 380	238 - 380	238 - 380
Weight - jib (kg)	-	-	368*	368*	-

* Incl. hose and pipe kit

HIAB 175-5



Disclaimer

Hiab cranes has been built to meet the highest standards of safety and service life and has been thoroughly tested. Strength calculations have been carried out in accordance with DIN 15018, crane group B3. Hiab's certified Quality Assurance System complies with the ISO 9001. Some of the items in our literature may be extra equipment. Certain applications may require an official permit. We reserve the right to change technical specifications without prior notice. Hiab cranes produced for EU-countries are CE-marked and comply with the European Standard EN 12999.