

# SY335C<sub>LC</sub> Excavator



## KEY FEATURES

- Engine: Cummins QSL 9, Tier 4i
- Newly designed SANY cab has excellent space, wide visibility and easy access to controls to maximize operator comfort
- Enhanced engine/hydraulic management system marries excellent control and high productivity with fuel efficient performance
- Standard features include two-way auxiliary hydraulics, a pattern-control change valve, and rear-view camera
- Focus on reliability and serviceability ensures convenient access and increased uptime

## SPECIFICATIONS

### Gross Power

290 hp / 216 kW

### Operating Weight

79,860 lb / 36 224 kg

### Dig Depth

24' 2" / 7377 mm

### Arm Digging Force

35,969 lbf / 160 kN

### Meco Miami, Inc.

5825 NW 74th Avenue, Miami, FL 33166

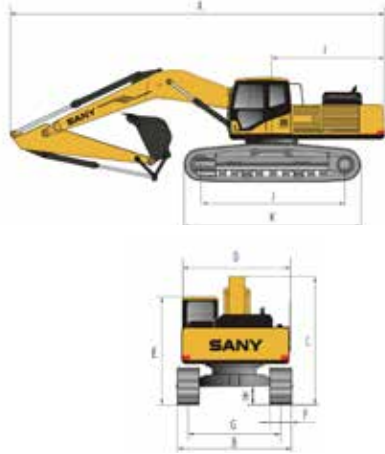
Tel: (305) 592-4332 | Fax: (305) 477-3543

[www.mecomiami.com](http://www.mecomiami.com)



**SANY**  
**AMERICA**

# SY335CLC Dimensions & Specifications



## SY335C Lift Capacity lb (kg)

LPH ft (m)	LPR ft (m)										Lift Capacity Max Radius		
	9.8 (3.0)		14.8 (4.5)		19.7 (6.0)		24.6 (7.5)		29.5 (9.0)				
	End	Side	End	Side	End	Side	End	Side	End	Side	End	Side	Radius ft (m)
24.6 (7.5)	-	-	-	-	-	-	*18,129 (8223)	15,161 (6877)	-	-	*18,146 (8231)	14,617 (6630)	25.1 (7.66)
19.7 (6.0)	-	-	-	-	-	-	*18,234 (8275)	15,071 (6836)	-	-	*17,626 (7995)	12,189 (5529)	28.1 (8.55)
14.8 (4.5)	-	-	-	-	*22,309 (10119)	*22,309 (10119)	*19,273 (8742)	14,663 (6651)	*17,505 (7940)	11,109 (5039)	*17,410 (7897)	10,884 (4937)	29.9 (9.11)
9.8 (3.0)	-	-	*33,729 (15299)	28,636 (12989)	*25,009 (11344)	19,229 (8722)	*20,604 (9346)	14,121 (6405)	*17,948 (8141)	10,884 (4937)	*17,392 (7889)	10,199 (4626)	30.8 (9.40)
4.9 (1.5)	-	-	*37,397 (16963)	26,832 (12171)	*27,152 (12316)	18,274 (8289)	*21,707 (9846)	13,603 (6170)	*18,294 (8298)	10,631 (4822)	*17,450 (7915)	9,954 (4515)	31 (9.44)
0.0	-	-	*39,249 (17083)	26,070 (11825)	*28,003 (12702)	17,661 (8011)	*22,152 (10048)	13,223 (5998)	*18,124 (8221)	10,448 (4739)	*17,509 (7942)	10,119 (4590)	30.3 (9.23)
-4.9 (-1.5)	*28,334 (12852)	*28,334 (12852)	*35,613 (16154)	25,929 (11761)	*27,196 (12366)	17,408 (7896)	*21,522 (9762)	13,049 (5919)	-	-	*17,478 (7928)	10,774 (4887)	28.7 (8.76)
-9.8 (-3.00)	*40,283 (18272)	*40,283 (18272)	*31,581 (14325)	26,167 (11869)	*24,645 (11179)	17,434 (7926)	*19,052 (8642)	13,135 (5958)	-	-	*17,628 (7966)	12,214 (5540)	26.2 (7.98)
-14.8 (-4.5)	*30,426 (13801)	*30,426 (13801)	*24,800 (11249)	*24,800 (11249)	*19,202 (8710)	*19,202 (8710)	-	-	-	-	*15,820 (7176)	*15,820 (7176)	22.2 (6.78)

Capacities marked with an asterisk (\*) are limited by hydraulic capacities. See #1

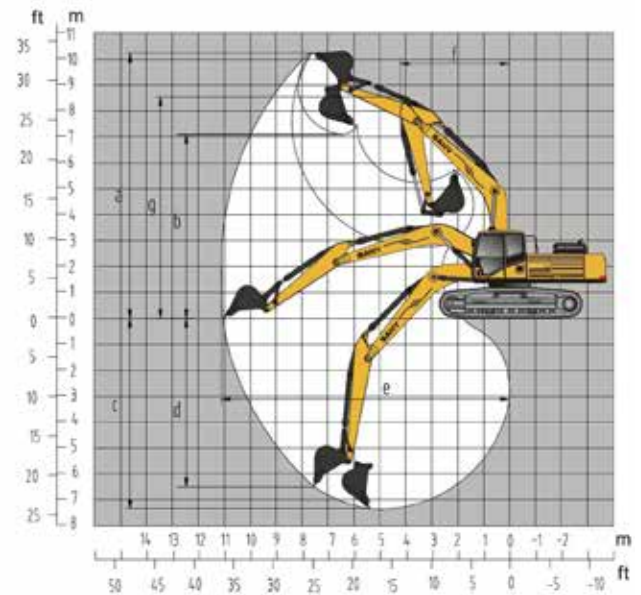
## Overall Dimensions

	U.S. (ft - in)	Metric (mm)
A Transport Length	36' 5"	11 100
B Transport Width	11' 2"	3410
C Transport Height	11' 6"	3505
D Upper Width	9' 10"	3000
E Cab Height	10' 8"	3262
F Std Track Shoe Width	2' 7"	800
G Track Gauge	8' 6"	2590
H Minimum Ground Clearance	1' 8"	541
I Tail Swing Radius	10' 10"	3304
J Length Center Idler to Center Sprocket	13' 7"	4150
K Track Length (Overall)	16' 7"	5080
Boom Length	21' 4"	6470
Std Arm Length	10' 5"	3187

## Machine Parameters

	U.S.	Metric
Operating Weight	82,371 lb	37 363 kg
Gross Power (ISO 14396 / SAE 1995)	290 hp	216 kW
Engine Max Torque	895 lbf @ 1500	1213 N m @ 1500
Engine Displacement	543 in <sup>3</sup>	8.9 liter
Main Pump Flow	2 x 99 gal/min	2 x 375 liter/min
Swing Speed	9.8 rpm	9.8 rpm
Travel Speed	2.1 / 3.2 mph	3.4 / 5.1 km/h
Draw Bar Pull (Tractive Effort)	53,055 lbf	236 kN
Max Arm Digging Force	35,969 lbf	160 kN
Number of Upper Rollers	2	2
Number of Lower Rollers	9	9
Fuel Tank Capacity	137 gal	520 liter
Hydraulic Tank Capacity	90 gal	340 liter
Cooling System Capacity	12.5 gal	48 liter
Engine Oil Capacity	7.67 gal	29 liter
Ground Pressure (800 mm Shoes)	7.1 psi	48.7 kPa

- Lift capacities shown do not exceed 75% of minimum tipping loads or 87% of hydraulic capacities.
- Lift capacities apply only to the machine as originally manufactured and normally equipped by the manufacturer.
- The total mass of the machine 37363 kg with standard bucket, 800 mm grouser shoes, 6470 mm boom, 3187 mm arm, 6800 kg counterweight, all operating fluids and 75 kg operator.
- Lift capacities as per ISO 10567:2007.
- LPH = Load Point Height from ground. LPR = Load Point Radius from center of swing.



## Operating Range

	U.S. (ft - in)	Metric (mm)
a Max Digging Height	33' 3"	10 135
b Max Dumping Height	24' 3"	7391
c Max Digging Depth	24' 2"	7377
d Max Vertical Wall Digging Depth	23' 1"	7047
e Max Digging Reach	36' 5"	11 103
f Min Swing Radius	14' 7"	4462
g Max Height at Minimum Swing Radius	28'	8527